

# NEUTRAL BASE COMPARTMENT M40

Project .....  
Rev.: .....  
Zone: .....  
Location: .....



CODICE  
CR1355379

MODELLO  
Q90VA400

SERIE  
QUEEN 9

## GENERAL CHARACTERISTICS

It is the choice of those who need maximum strength and power. Queen9 is distinguished by its 900 mm depth, a 20/10-thick work surface, double-crown burners, and the use of elegant stainless steel with a Scotch Brite finish.

Details that not only offer maximum functionality and aesthetics, but also take into account the practical and ergonomic needs of those who work.

The extreme freedom of composition allows top models to be combined with accessorizable oven and neutral base units, even with hygienic finishes.

With more than 350 models immediately available in the catalog, Queen9 is already ready to start giving its best.

In addition, all equipment that makes up a Queen9 kitchen is certified in compliance with international standards, including CE, GAR, AGA and others.



## TECHNICAL SPECIFICATIONS

# NEUTRAL BASE COMPARTMENT M40

Project .....  
Rev.: .....  
Zone: .....  
Location: .....



CODICE  
CR1355379

MODELLO  
Q90VA400

SERIE  
QUEEN 9

## Technical Information

SPECIFICATION	DATA
MATERIAL	CR1355379
DEFINITION	Q90VA40 BASE VANO M40 S/PORTINE
COMMERCIAL LINE	QUEEN
DIM. WIDTH	400 mm
DIM. PRODUCTIVITY	900 mm
DIM. HEIGHT	650 mm
NET WEIGHT	13 Kg
VOLUME (net)	0.234
PACKAGE LENGTH	400 mm
PACKAGE WIDTH	900 mm
PACKAGING HEIGHT	650 mm
PACKAGE VOLUME	0,400 m3
GROSS PACKING WEIGHT	14.8 Kg
CERTIFIED MODEL	Q90VA40

# NEUTRAL BASE COMPARTMENT M40

Project .....  
 Rev.: .....  
 Zone: .....  
 Location: .....

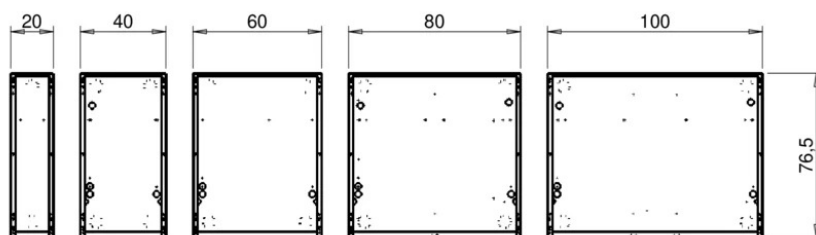
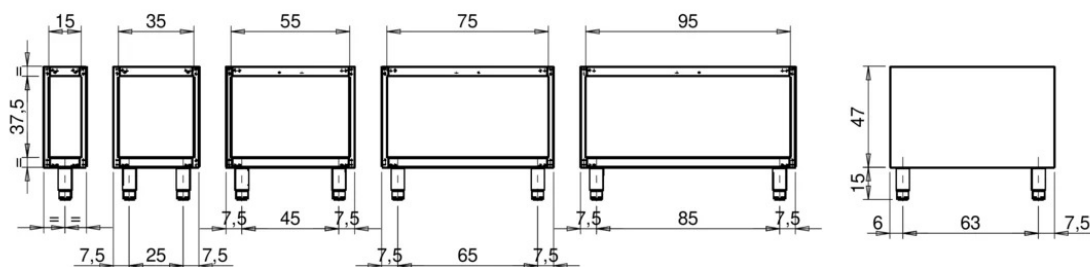


CODICE  
CR1355379

MODELLO  
Q90VA400

SERIE  
QUEEN 9

MISURE IN cm - DIMENSIONS IN cm - ABMESSUNGEN IN cm - MESURES EN cm  
 MEDIDAS EN cm - MATEN IN cm - DIMENSIONES EN cm



## Legenda - Legende - Key - Légende - Leyenda - Legenda - Legenda

<b>E</b> Pressacavo entrata linea elettrica - Stopfbuchse - Electric cable stress relief - Presse étoupe de câble él - Pisacable - Elektrische kabelwartel - Entrada cabo eléctrico	<b>G</b> Arrivo gas - Gasanschluss - Gas connection - Arrivée gaz - Union de gas - Gasaansluiting - Ligação gás
<b>S</b> Attacco scarico acqua - Wasserablauf - Water outlet - Vidange de l'eau - Desaguadero - Wateraftapaansluiting - Junção descarga água	<b>H20</b> Arrivo acqua - Wasseranschluss - Water inlet - Arrivée eau - Union de água - Wateraansluiting - Junção alimentação água
<b>S1</b> Scarico vasca - Wannenabflusrohr - Pan outlet - Vidange du bac - Descarga cuba - Water toevoer - Descarga da cuba	<b>A1</b> = Calda - Heiss - Warm - Chaude - Caliente - Warm - Morno <b>A2</b> = Fredda - Kalt - Cold - Froid - Fria - Koude - Frio
<b>S2</b> Valvola di depressione - Anti-depression valve - Unterdruck ventil - Soupape de dépression - Válvula de depresión - Onderdrukklep - Válvula de depressão	
<b>S3</b> Scarico acqua intercapedine - Wasserablauf Zwischenraum - Jacket water drain Evacuation eau double envelope - Descarga de agua intersticios - Afvoer water tussenruimte - Descarga de água na marmita com Sistema de aquecimento indirecto	
<b>S4</b> Scarico - Abflusrohr - Drain - Tuyau d'évacuation - Tubo de drenaje - Aftapbuis - Tubulação de dreno	<b>L</b> Rubinetto di livello - Level tap - Wasserhahn - Robinet de niveau - Grifo de nivel - Niveaakraan - Torneira de nível

# NEUTRAL BASE COMPARTMENT M40

Project .....  
Rev.: .....  
Zone: .....  
Location: .....

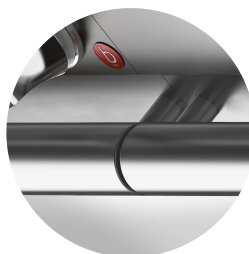


CODICE  
CR1355379

MODELLO  
Q90VA400

SERIE  
QUEEN 9

## PRODUCT'S RANGE PLUS



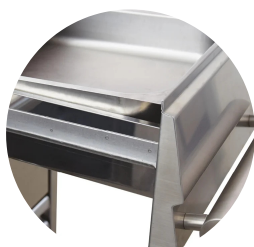
The front bar is a comfortable foothold for the cook; it keeps a safe distance from the worktop and thus protects against accidental collisions with what is resting on the worktops and at the same time the handles.



Thanks to the jet-proofing certification (IPX5) obtained through specific tests, knobs and under-knobs can be washed at the end of the working day without compromising functionality and safety.



Drawers for GN 1/1



Thanks to the jet-proofing certification (IPX5) obtained through specific tests, knobs and under-knobs can be washed at the end of the working day without compromising functionality and safety.